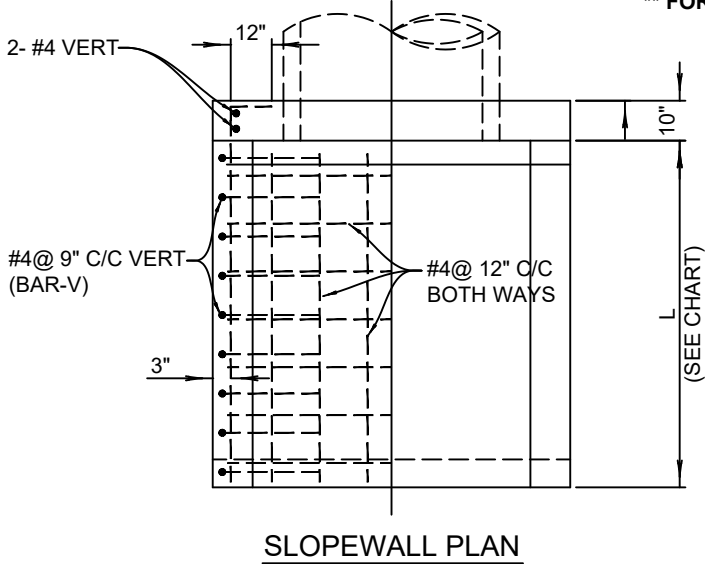


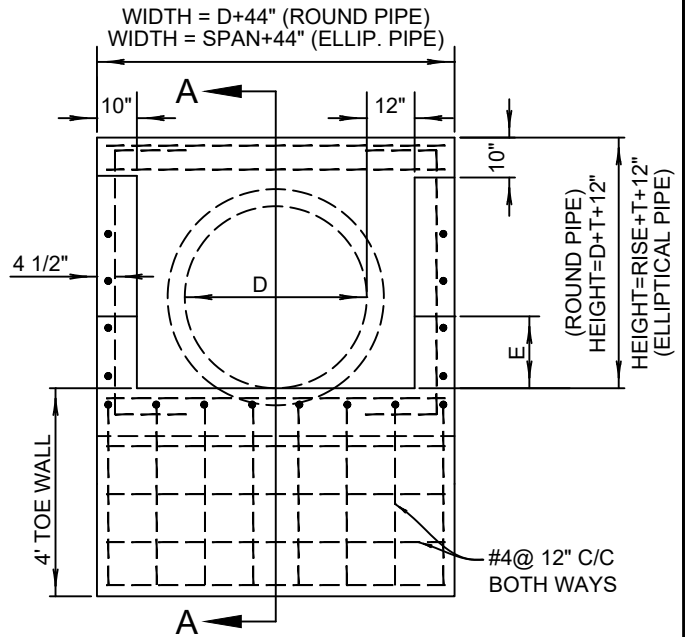
**** FOR SPECIAL SLOPEWALLS - REFER TO TABLE, STRM-23 DETAIL ****



SLOPEWALL PLAN

NOTES:

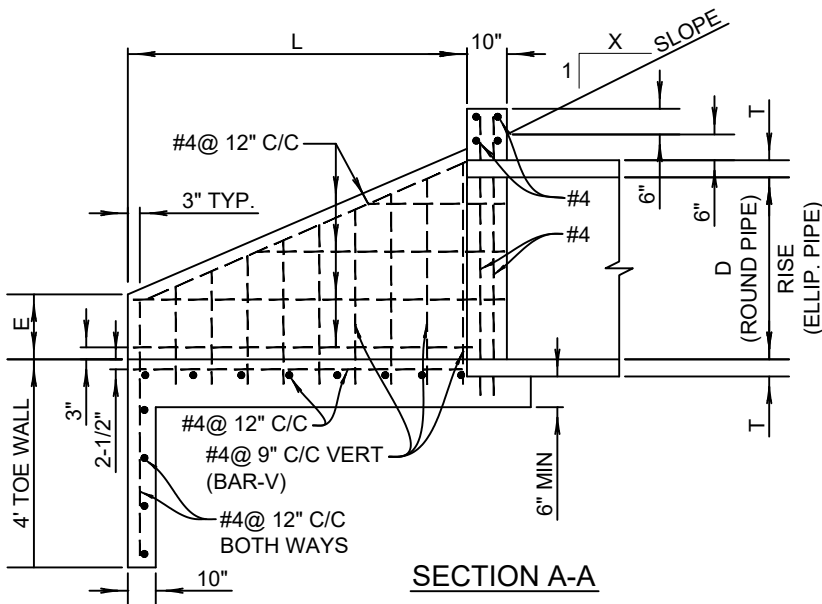
1. CONCRETE FC' = 3000 PSI MINIMUM @ 28 DAYS, WITH 5% + 1% AIR ENTRAINMENT.
2. REINFORCING STEEL TO MEET ASTM A-615, GRADE 60.
3. SLOPEWALL AND HEADWALL TO BE CONSTRUCTED TO ODOT SPECIFICATIONS.



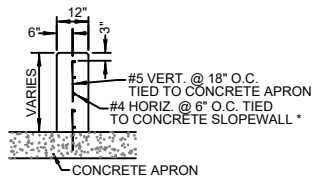
ELEVATION

General Notes

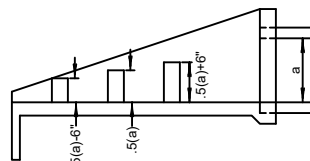
1. ALL CONSTRUCTION AND MATERIALS SHALL BE IN ACCORDANCE WITH THE CURRENT OKLAHOMA DEPARTMENT OF TRANSPORTATION STANDARD SPECIFICATIONS (2009).
2. REINFORCING STEEL IN BOTTOM SLAB SHALL BE SUPPORTED ON METAL BAR CHAIRS. CHAIRS SHALL BE SUPPORTED ON CONCRETE BLOCKS OR CLASS 'C' CONCRETE STRIPS SPACED AT 4' CENTER TO CENTER. THE TOP OF SUPPORTS SHALL BE AT THE ELEVATION OF THE BOTTOM OF THE FOOTING.
3. REINFORCING STEEL IN TOP SLAB SHALL BE SUPPORTED ON METAL BAR CHAIRS SPACED AT 4' CENTER TO CENTER.
4. ALL CONCRETE EDGES SHALL HAVE A 1 1/2 INCH CHAMFER UNLESS OTHERWISE SHOWN OR NOTED. ALL CHAMFER STRIPS SHALL BE SIZED LUMBER.
5. ALL REINFORCING STEEL SHALL BE GRADE 60 AND HAVE A 2 INCH MINIMUM CLEARANCE UNLESS OTHERWISE SHOWN ON THE PLANS.
6. REINFORCING STEEL IN THE WALLS SHALL BE HELD IN PLACE BY METAL BAR CHAIRS. MAXIMUM SPACING OF CHAIRS SHALL BE 6' CENTER TO CENTER.
7. COST OF METAL CHAIRS, CONCRETE BLOCKS, OR CONCRETE STRIPS SHALL BE INCLUDED IN OTHER ITEMS OF WORK.
8. ROUGHEN SURFACE AT ALL CONSTRUCTION JOINTS.
9. ALL BAR BEND DIMENSIONS ARE OUT TO OUT.
10. MINIMUM REINFORCING STEEL LAP 4'-0" UNLESS OTHERWISE SHOWN (ALL COST BID FOR REINFORCING STEEL).



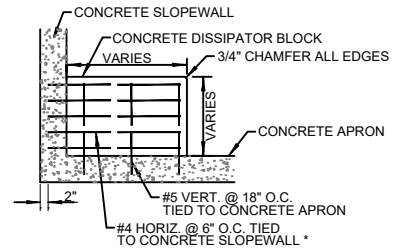
SECTION A-A



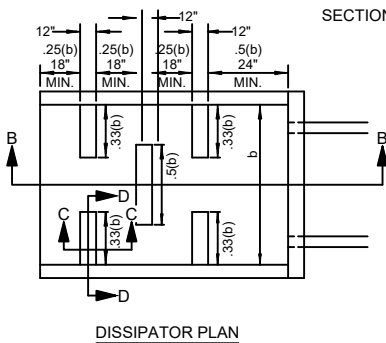
SECTION C-C



SECTION B-B



SECTION D-D



DISSIPATOR PLAN



Energy Dissipator Detail

| REVISION | BY | DATE | CONCRETE SLOPEWALL (1) STANDARD DETAILS CITY OF JENKS, OKLAHOMA ENGINEERING DEPARTMENT | |
|---------------|----|------|--|--|
| | | | | |
| | | | | |
| | | | | |
| DATE: 4-24-23 | | | STANDARD NO. STRM-22 | |