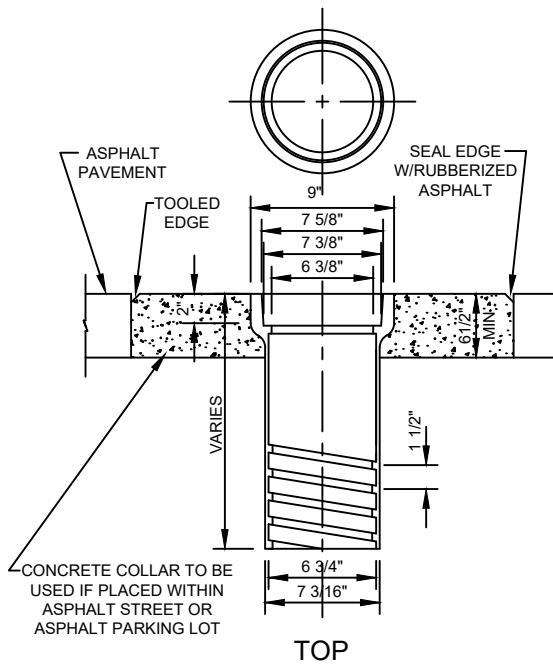
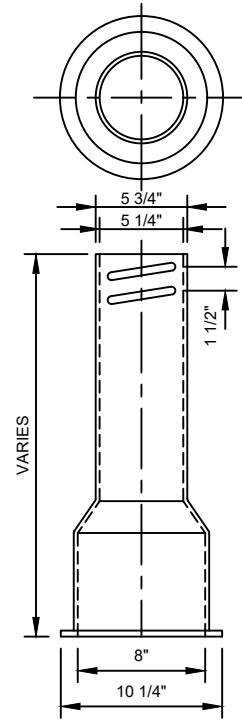


LID

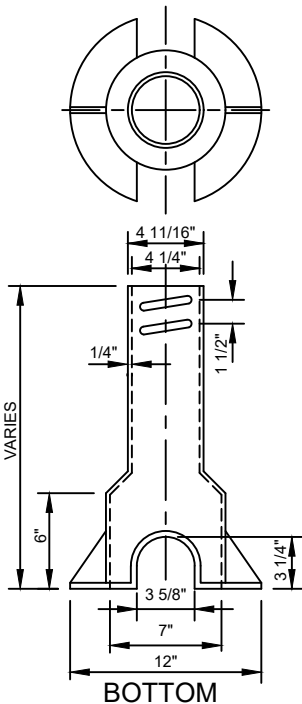


TOP

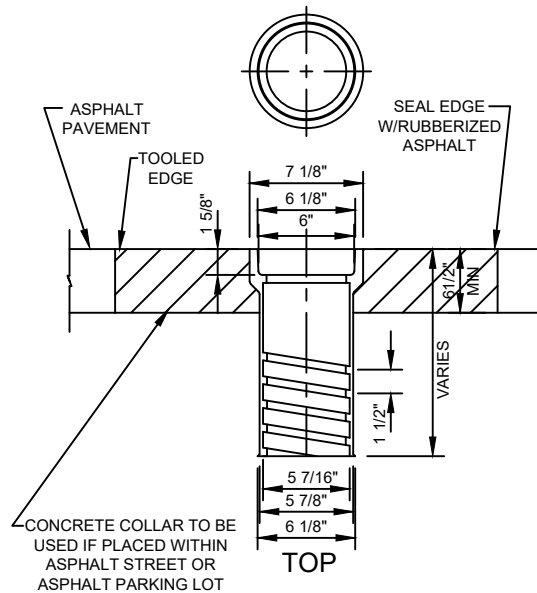
4" - 12" VALVE BOX DETAIL



BOTTOM

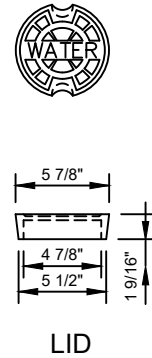


BOTTOM



TOP

2" - 3" VALVE BOX DETAIL



LID

NOTES:

1. IN PAVED AREAS, WATER LINE CONTRACTOR TO PLACE 2 FOOT SQUARE CONCRETE PAD AROUND EACH WATER VALVE AFTER PAVING IS COMPLETE . THE PAVEMENT SHALL BE SAW-CUT FOR PAD PLACEMENT.
2. VALVE BOXES REQUIRING OVER 2 ADDITIONAL BOTTOM SECTIONS SHALL BE EXTENDED USING PVC PIPE WITH A BOTTOM AND TOP SECTION PLACED ON TOP OF THE PVC PIPE.

REVISION	BY	DATE	VALVE BOX STANDARD DETAILS	
			ENGINEERING DEPARTMENT	
			DATE: 4-11-22	STANDARD NO. WAT-04